



Low Loaders



- 9 and 16T payload
- 50mm softwood sheet floor
- Spring assist ramps as standard
- Lockable plastic toolbox
- Durbar sheeted beavertail with grip bars
- Standard 700mm (2'4" wide) ramps
- Adjustable binder strap ramp supports
- Tie points as standard
- Galvanised drawbar boot & toolbox door.
- Hydraulic Brakes
- Park brake
- Dual LED lights to rear including number plate light and side lights
- Side and Rear Reflective Tape
- Sprung drawbar standard
- Hose Stowage
- Fixed towing Eye
- 215/75/17.5 Twin Wheels

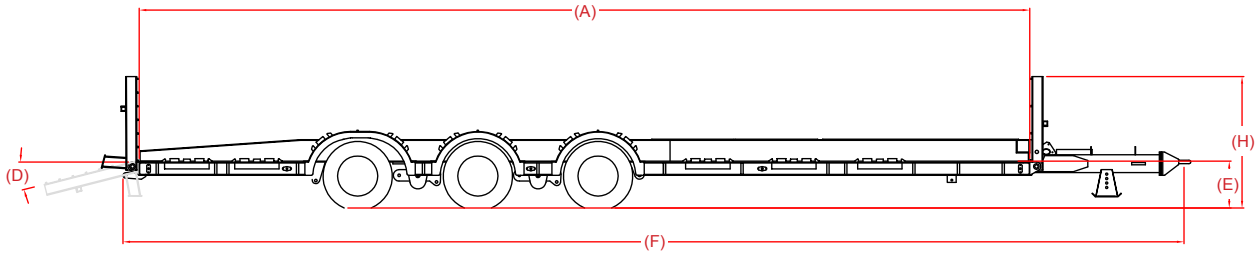
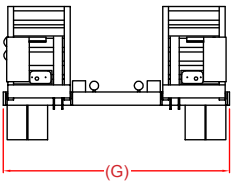
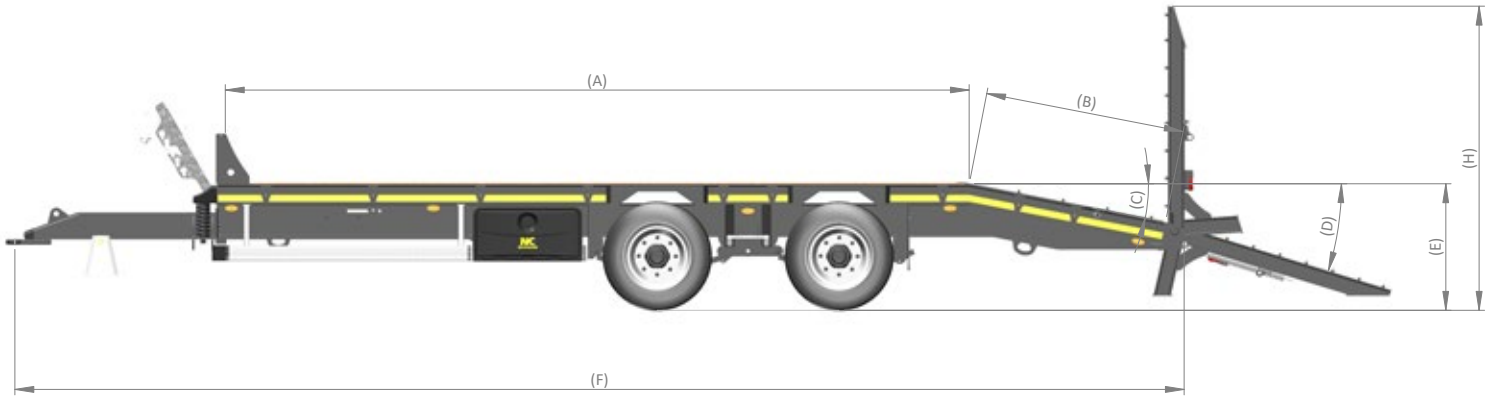


- GVW 22 and 25T
- 50mm softwood sheet floor
- Spring assist ramps as standard
- Lockable plastic toolbox
- Durbar sheeted beavertail with grip bars
- Standard 700mm (2`4" wide) ramps
- Adjustable binder strap ramp supports
- Tie points as standard
- Galvanised drawbar boot
- Hydraulic Brakes
- Park brake
- Dual LED lights to rear including number plate and side lights
- Side and Rear Reflective Tape
- Sprung drawbar
- Hose Stowage
- Fixed towing Eye



- 27T gross weight (3 axle)
- 35T gross weight (4 axle)
- Optional 32T gross version (3 axle)
- Heavy duty wheel arches c/w grip bars
- Hydraulic brakes
- Full LED road lights
- Fixed towing eye
- Front & rear loading ramps
- Chime bar tie points
- Plated H-Beam fabricated chassis





Forestry trailer

	MODEL	Bed size (includes headboard) (A)	Beavertail (B)	Beavertail Angle (C)	Ramps (Spring Assisted)	Ramp Angle (D)	Floor height (E)	Max Length (F)	Width (G)	Height With Ramps (H)	Chassis	Axle	Brakes (Hydraulic)	Drawbar	Slack Adjusters	Tyres
Tandem Axle	9 T	4.61m x 2.286m (15' x 7'6")	1.51m (5')	14°	1.7m x 0.71 (5'7" x 2'4")	15°	0.94m (37")	8.16m	2.286m	2.2m	200x75x23 RSC plated	70mm 6-stud	300x60	Sprung	No	4 off 400/60x15.5
	16 T	5.49m x 2.54m (18' x 8'4")	1.52m (5')	11°	1.7m x 0.71m (5'7" x 2'4")	17°	0.9m (35")	9.1m	2.54m	2.24m	254x146x31 H-Beam	90mm 8-stud	300x90	Sprung	Yes	8 off 215/75x17.5
	16 T	5.49m x 2.54m (18' x 8'4")	1.52m (5')	11°	2.024m x 0.71m (6'8" x 2'4")	18°	1.03m (40 1/2")	9.1m	2.54m	2.69m	254x146x31 H-Beam	90mm 8-stud	400x80	Sprung	Yes	4 off 445/45x19.5
Tridem Axle	22 T	6.09m x 2.54m (20' x 8'4")	1.52m (5')	11°	1.7m x 0.71m (5'7" x 2'4")	17°	0.9m (35")	9.1m	2.54m	2.24m	254x146x31 H-Beam	90mm 8-stud	300x90	Sprung	Yes	12 off 215/75xR17.5
	22 T	6.09m x 2.54m (20' x 8'4")	1.52m (5')	11°	2.024m x 0.71m (6'8" x 2'4")	18°	1.03m (40 1/2")	9.1m	2.54m	2.69m	254x146x31 H-Beam	90mm 8-stud	400x80	Sprung	Yes	6 off 445/45xR19.5
	25 T	6.99m x 2.54m (20' x 8'4")	1.52m (5')	11°	1.7m x 0.71m (5'7" x 2'4")	17°	0.91m (36")	9.1m	2.54m	2.25m	254x146x31 H-Beam	100mm 8-stud	300x90	Sprung	Yes	12 off 215/75xR17.5
	25 T	6.99m x 2.54m (20' x 8'4")	1.52m (5')	11°	2.024m x 0.71m (6'8" x 2'4")	18°	1.03m (40 1/2")	9.1m	2.54m	2.7m	254x146x31 H-Beam	90mm 8 Stud	400x80	Sprung	Yes	6 off 445/45xR19.5
	Forestry 27 T (Gross)	10m x 2.54m (32'10 x 8'4")	N/A	N/A	1.05m x 0.71m (3'5" x 2'4")	20°	0.52m (20")	12.16m	2.54m	1.48m	254x146x31 H-Beam plated	100mm 8 Stud c/w Rear Steer	300x90	Sprung	Yes	12 off 215/75xR17.5
	Forestry 30 T (Gross)	10m x 2.54m (32'10 x 8'4")	N/A	N/A	1.05m x 0.71m (3'5" x 2'4")	20°	0.52m (20")	12.16m	2.54m	1.48m	254x146x31 H-Beam plated	127mm 10 Stud c/w Rear Steer	300x200	Sprung	Yes	12 off 215/75xR17.5

Please note: Imperial dimensions are rounded to the nearest foot or inch

Options



**Bolt-On Bale Wedge
(Cheese Wedge)**



Wedge Ramp



6ft Steel Tool Box



Track Guides



Double T Bar Headboard



Floor Hook

Options



**Headboard
Outrigger
Storage Tray**



**Durbar
Sheeted
ramps**



**Mantis
Ramps**



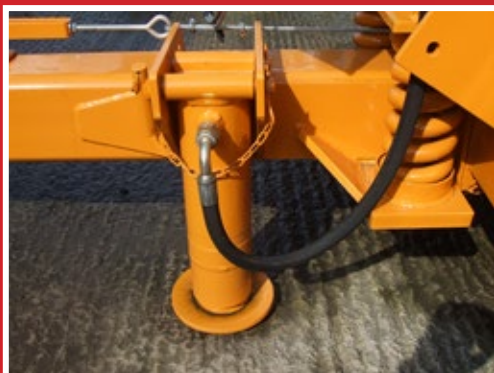
**Rear Tow
hitch**



**Swing
Outriggers**



**Rear
steering
axle**



Hydraulic Jack



Pull out marker board



Forestry outriggers

Common Options

BRAKES

Dual Air/Hydraulic Brakes
Air only brakes
Load sensing air or Hydraulic
Cable Operated breakaway system
NC Electric Operated breakaway system
ABS complete with Susie
Automatic Slack Adjusters

WHEELS

Various wheel alternatives available

AXLES

10 stud high speed
Rear Steering Axle

FLOOR

Longer Bed
Floor Hooks
Flatbed with no Beavertail or ramps (same overall length)
1.35m Wide bucket well in tail
Hydraulic Beavertail

OUTRIGGERS

Swing out outriggers on bed or beavertail
Outrigger Storage Tray c/w Boards
Pull out markerboards c/w dual LED lights (4 off)

RAMPS

Hydraulically Operated Ramps (all widths)
Wider Ramps
Wood Sheeted Ramps
Wedge Ramps
Mantis Flip-toe Ramps
2.2m Long Ramp

OTHER

Bolt-On Bale Cheese wedge (Steel)
Adjustable Height towing eye
Rear Tow Hitch
Front Bale Rack
Double T-bar Headboard
Track Guides
Post holes
4 off Twist Locks

Revision.04 – November 2023

In accordance with our policy of continued development we reserve the right to alter specification and design without notice.



NC Engineering (Hamiltonsbawn) Ltd
2 Killyrudden Road
Hamiltonsbawn
Co. Armagh
Northern Ireland
BT61 9SF

Tel: +44 (0) 28 38 871970
Fax: +44 (0) 28 38 870362
Email: sales@nc-engineering.com
www.nc-engineering.com

